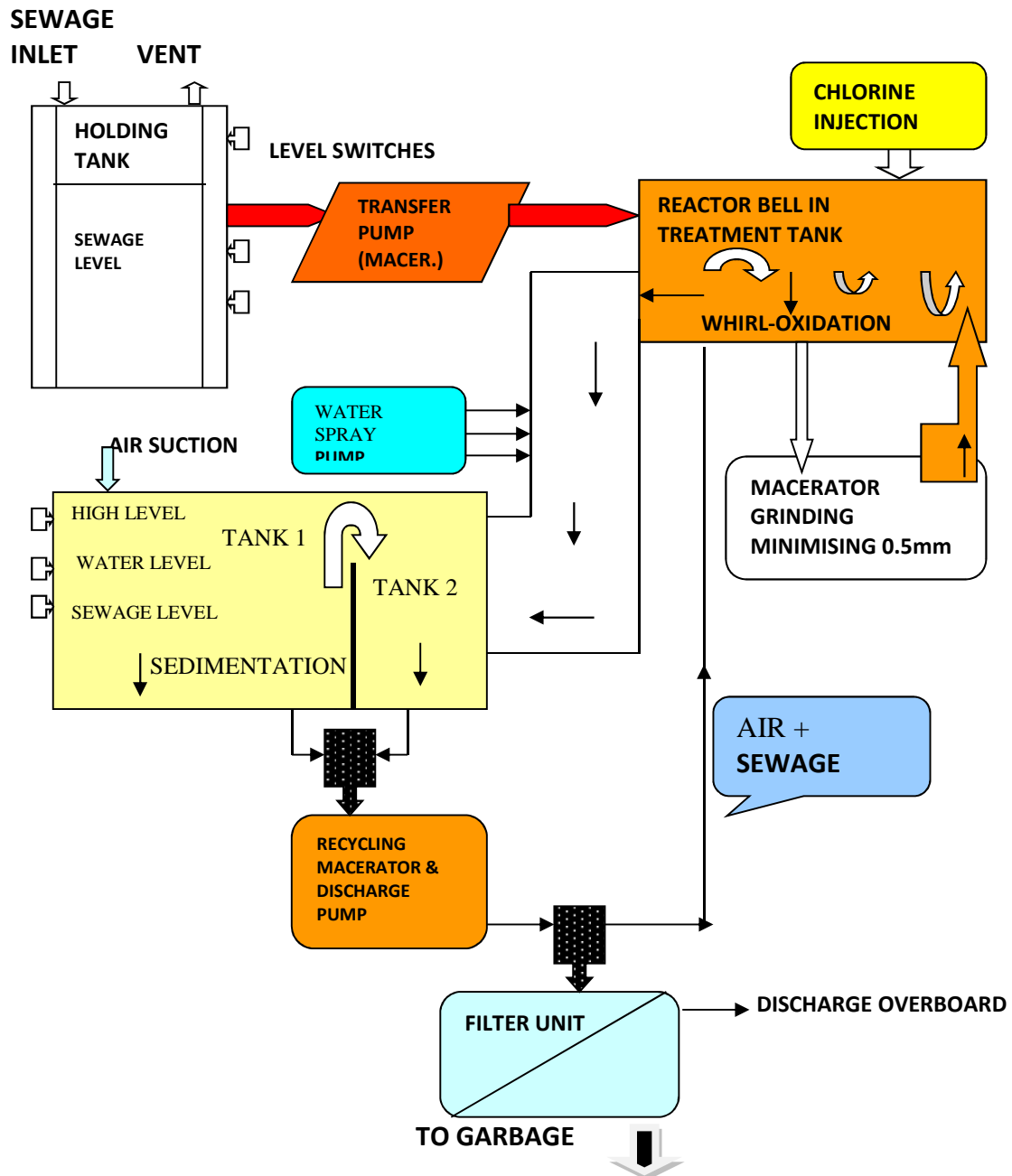


## THE MINI-BIOCON SYSTEM UNDER MEPC. 159(55)

### FLOW PROCESS OF MINI BIOCON SEWAGE PLANT

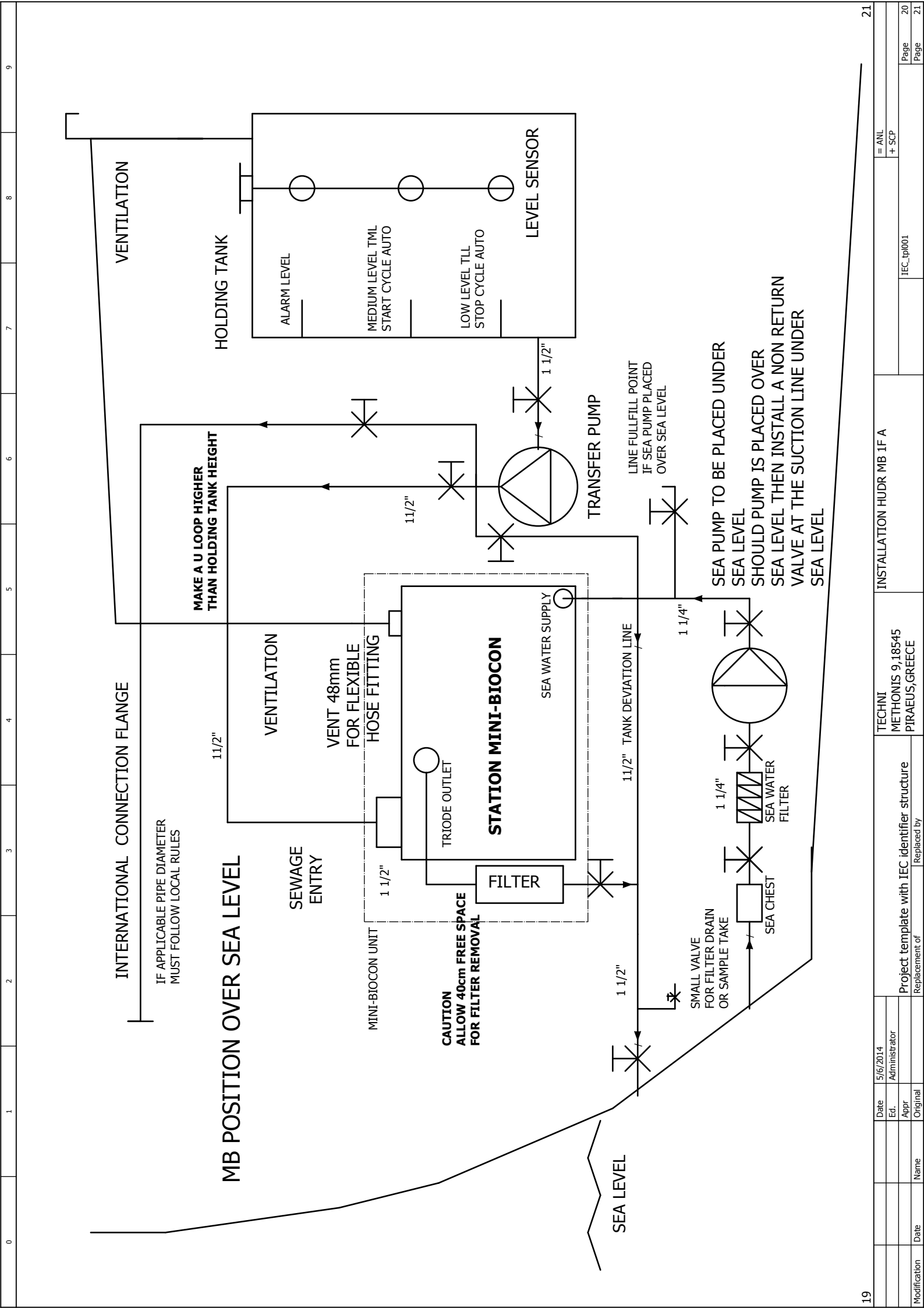


A certain quantity of sewage is treated in every cycle. Under the presence of oxygen and Naocl organic matter is oxidized and chemical –physical reactions inside disinfect the water and reduce the sediments volume which is filtered through a filter interchangeable unit so that the water can be discharged into the sea according to the new international standards. Filter content, after naturally drained can be either changed or cleaned for further action. Frequency clogging depends on load and certain conditions.

## SYSTEM CHARACTERISTICS

- **VOLTAGE 1 x 220V (50 or 60Hz), 380V or 440V**
- **POWER 1,3KW WITH SEA WATER PUMP, 8A RATED CURRENT (at 220V, 4A at 400V)**
- **WHEN SUPPLIED FROM HOLDING TANK THEN NEEDED  
>TRANSFER PUMP SELF PRIME, 1 1/2KW OR  
NON SELF PRIME CHOICE FROM 1X220V OR 3X380V  
>3 LEVEL SENSOR (START-STOP AUTO, ALARM)**
- **HYDRAULIC CAPACITY: 2.500 LITRES /DAY or 4000 with black and grey waters**
- **ORGANIC LOAD: 1,32 KG BOD5/DAY**
- **DIMENSIONS:  
L=660 (800 with chlorine pump) mm  
W=600mm  
H=720mm**
- **WEIGHT EMPTY: 110 KG**
- **WEIGHT IN OPERATION: 200KG**
- **CHLORINE CONSUMPTION (12% CONCENTRATION)  
1 LITER PER 4 CUBIC METRE OF SEWAGE TREATED**
- **CONSTRUCTED FROM SS316(TANK,PUMPS,PIPING)**
- **TRANSFER PUMP+ LEVEL SENSOR CONTROLLED FROM MB'S ELECTRIC PANEL.**
- **DISPLAY SCREEN WHERE ALL PARAMETERS CAN BE ADJUSTED CONTROLLED AND MONITORED**
- **FILTER HOUSING Ø200,H=560mm(if installed elsewhere)**
- **EFFLUENT CHARACTERISTICS COMPLYING WITH MEPC.159(55)**
- **DNV CERTIFIED**

KEEP THE SEA CLEAN WITH  
BIOCON MARINE SEWAGE TREATMENT SYSTEMS  
BY TECHNI SA  
MARINE MACHINERY DEVELOPMENT COMPANY  
9 METHONIS STREET, 18545 PIRAEUS, ATHENS GREECE  
[www.techni-sa.com](http://www.techni-sa.com), [info@techni-sa.com](mailto:info@techni-sa.com)



INTERNATIONAL CONNECTION FLANGE

IF APPLICABLE PIPE DIAMETER  
MUST FOLLOW LOCAL RULES

**MB POSITION OVER SEA LEVEL**

MAKE A U LOOP HIGHER  
THAN HOLDING TANK HEIGHT

1 1/2"

VENTILATION

SEWAGE  
ENTRY

VENT 48mm  
FOR FLEXIBLE  
HOSE FITTING

MINI-BIOCON UNIT

1 1/2"

**CAUTION  
ALLOW 40cm FREE SPACE  
FOR FILTER REMOVAL**

**STATION MINI-BIOCON**

SEA WATER SUPPLY

TRIODE OUTLET

FILTER

1 1/2"

SEA LEVEL

1 1/2" TANK DEVIATION LINE

SMALL VALVE  
FOR FILTER DRAIN  
OR SAMPLE TAKE

1 1/4"

SEA CHEST

SEA WATER  
FILTER

LINE FULLFILL POINT  
IF SEA PUMP PLACED  
OVER SEA LEVEL

TRANSFER PUMP

SEA PUMP TO BE PLACED UNDER  
SEA LEVEL  
SHOULD PUMP IS PLACED OVER  
SEA LEVEL THEN INSTALL A NON RETURN  
VALVE AT THE SUCTION LINE UNDER  
SEA LEVEL

VENTILATION

HOLDING TANK

ALARM LEVEL

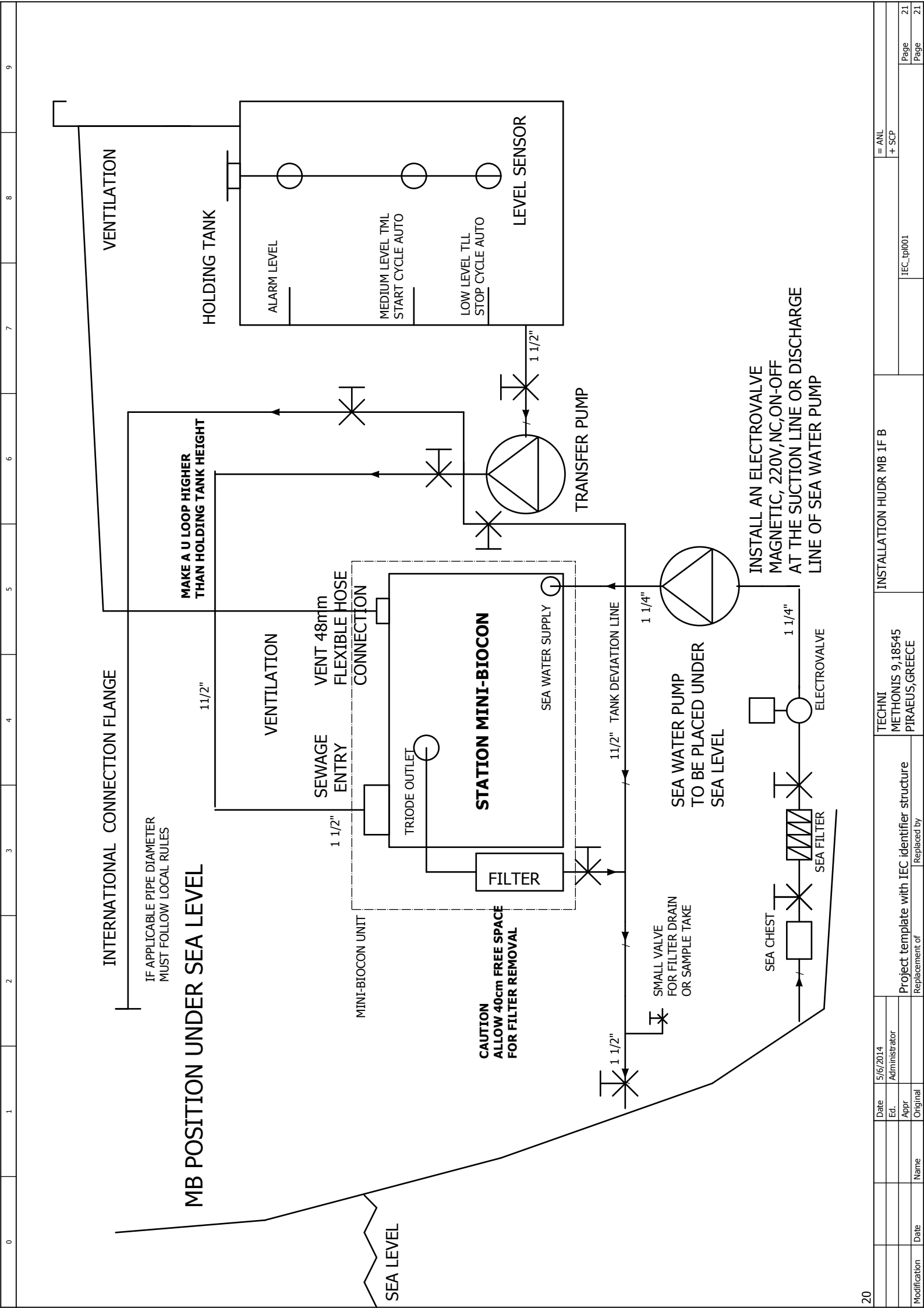
MEDIUM LEVEL TML  
START CYCLE AUTO

LOW LEVEL TLL  
STOP CYCLE AUTO

LEVEL SENSOR

1 1/2"

Date	5/6/2014	TECHNI	INSTALLATION HUDR MB IF A	21
Ed.	Administrator	METHONIS 9,18545 PIRAEUS,GREECE		
Appr		Project template with IEC identifier structure		
Name		Replacement of		
Date		Replaced by		
Modification				
Page	20	IEC_tp001		
Page	21			



Modification	Date	Name
	Ed.	Administrator
	Appr	
	Date	5/6/2014

Project template with IEC identifier structure  
 Replacement of [ ] Replaced by [ ]

TECHNI  
 METHONIS 9,18545  
 PIRAEUS,GREECE

INSTALLATION HUDR MB IF B

		= ANL + SCP
Page	21	IEC_tp001
Page	21	

# NEO MINI BIOCON

- 1 TREATMENT TANK
- 2 MACERATOR
- 3 ELECTRICAL PANEL
- 4 FILTER
- 5 DOSING PUMP
- 6 LEVEL SENSOR
- 7 INSPECTION DOOR
- 8 SEWAGE INLET SUPPLY (3" flange)
- 9 VENT (48mm OD rubber hose)
- 10 THREE WAY VALVE RECYCLING-DISCHARGE
- 11 THREE WAY VALVE TANK CHANGE
- 12 MACERATOR SUCTION
- 13 MACERATOR DISCHARGE
- 14 FILTER INLET
- 15 OVERBOARD (1/4" F THREAD)
- 16 SEA WATER INLET (1" M THREAD)
- 17 TANK 1 SUCTION
- 18 TANK 2 SUCTION
- 19 MANOMETER
- 20 CHLORIDE SUPPLY

